



**The gentleness you know.**

A level of interactivity never seen before.



Now, there's a STATIM® that's perfect for every practice.

Drawing on over 50 years of innovation, the leader in autoclave technology has created a complete line of STATIM Cassette Autoclaves – designed to meet the needs of every size of practice. The STATIM family comprises the fastest, most innovative autoclaves available today.

Employing a patented sterilization process, SciCan has developed the STATIM family to address the full range of instrument sterilization applications – from hygienists to multi-doctor practices – providing each with a superior solution in sterilization.

## Dentists around the world rely on STATIM.

Dental practitioners in over 90 countries around the world rely on STATIM to protect their patients and staff from infection – with sterilized instruments in just minutes.

In 1989, SciCan transformed the industry, developing the world's first compact sterilization unit designed to meet the growing need for handpiece sterilization. Today, the STATIM still boasts superior cycle times and processes for both wrapped and unwrapped cycles. In fact, the STATIM Cassette Autoclave® sterilizes up to ten times faster than traditional 'chamber style' units.

Employing a proprietary positive pressure pulse displacement technology – using saturated steam to remove air and effectively sterilize instruments between patients – the STATIM Autoclave ensures dentists always have an ample supply of instruments ready for use.

### STATIM'S Speed Reduces Instrument Investment

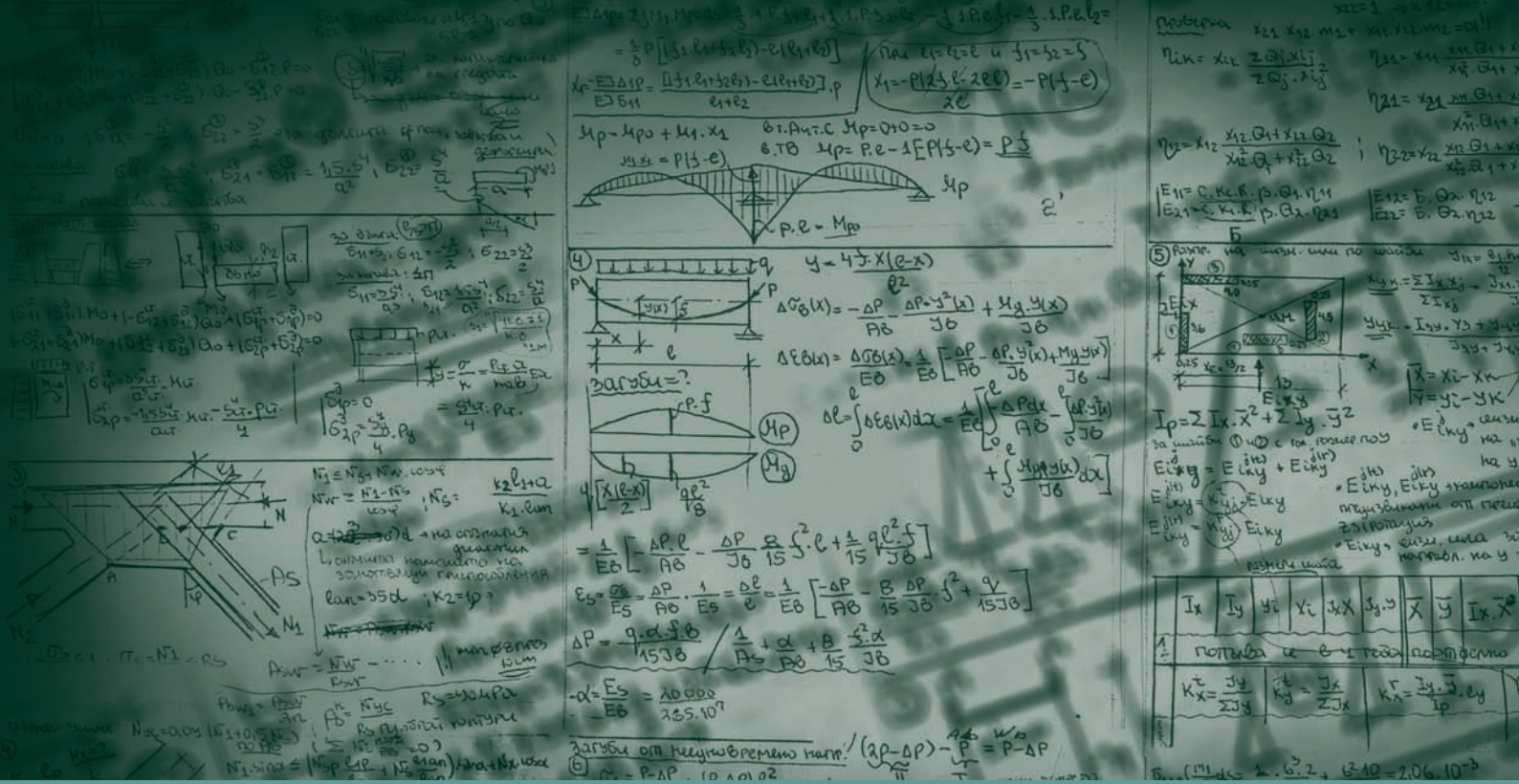
STATIM sterilizes handpieces and instruments for immediate use in as little as 8 minutes, reducing the number required as instruments can be processed 'just in time' or between patients.

### Increases Efficiency

Fast point-of-use sterilization makes turnaround a priority, increasing efficiency and virtually eliminates instrument bottlenecks.

### Gentle on Instruments

Our state-of-the-art steam technology is gentle on both solid and hollow instruments.



# STAT/M technology defined – what makes STAT/M different?

## Immediate Steam Generation

Unlike conventional autoclaves that need to heat an entire reservoir of water, STAT/M uses only a small, specific amount of water required for each cycle. Water is introduced into a heating device referred to as a 'steam generator', rapidly heated and converted to steam in mere seconds.

## Air Removal

Using PPPD technology and our patented steam injection process – air is automatically forced out of the sterilization chamber.

## Cassette System

The thin stainless steel walls of STAT/M's fully-removable cassette, (or sterilization chamber) allow for rapid heating and cooling of the chamber. As a result, STAT/M meets the conditions for sterilization and drying in a fraction of the time required by a conventional autoclave.



## Fully Satisfies EN13060 for Instrument Sterilization

STAT/M continues to meet all EN13060 requirements, powered by advanced microprocessor controlled cycles which deliver validated sterilization at speeds up to 5X faster than most conventional chambered autoclaves.

## Drying Technology

The STAT/M 2000 and 5000 have each been designed to provide you with a complete solution: rapid sterilization balanced by rapid drying. Introducing STAT/M Dri-Tec drying technology.



## Dri-Tec<sup>®</sup> – Convection Heat Drying Technology

The STAT/M 2000 uses convection heat to dry instruments by utilizing the remaining heat in the system after the sterilization phase. Heat is captured and released into the cassette, drying wrapped instrument loads in as little as 10 minutes.



## Dri-Tec<sup>®</sup> – Radiant Heat Drying Technology

The STAT/M 5000 uses heat generated by the sterilization cycle which is 'absorbed' by unique drying plates located in the sterilization chamber. Heat is transferred from the drying plates directly to instruments resulting in accelerated, full load drying in as little as 15 minutes.

# Introducing the new, 4th generation STATIM by SciCan.

## >> Fast

STATIM's unmatched speed and dependability have made STATIM the world's best-selling autoclave. And its patented gentle technology has also made STATIM the world's favourite.

## >> Forward

The STATIM G4 will offer you a level of interactivity never seen before. The STATIM G4, through its LCD touch screen control and Statim Live networking capability, has been designed to provide you with unprecedented ease of use and puts the user in total control.



## Touch

A high-resolution, 65K color touchscreen offers a vivid display of messages, current cycle information and customizable icons all with extraordinary clarity. Fully adjustable contrast levels let you optimize the screen to the lighting in your steri-centre, and its 2.5-inch by 3-inch dimensions allow easy viewing of downloadable learning modules.

## Connect

There's nothing like STAT/M Live, the networked portal through which you can view not only your STAT/M's current operations in real time, it also gives you access to cycle history, printing and validation information and sterilization records searchable by multiple fields. Capable of sending emails with cycle information errors directly to your dealer, your STAT/M G4 will let qualified technicians know when service is imminent, can perform software upgrades and even some remote troubleshooting.

## Protect

Patient safety relies on attention to detail. The STAT/M G4 supports verifiable processes that are PIN protected with user-defined IDs so that staff members can be required to authorize a cycle. This encourages extra attention to process and creates a safer environment for both staff and patients.

## Collect

An undocumented sterilization cycle might as well not have been done. With each cycle, information must be stored to protect your office and your patient. The integrated SciCan DataLogger stores all cycle information for the lifetime of the unit, a 2.0 USB port allows for the manual retrieval of cycle history, the 10/100Base-T Ethernet connection puts your PC in direct contact with your STAT/M and the RS232 serial printer port allows you to connect with an external printer.



Access your STAT/M via your PC through Statim Live



65k colour touchscreen provides a wealth of information



The G4 is capable of communicating directly with service personnel



Recommended essential STAT/S® instrument system



Loose instruments

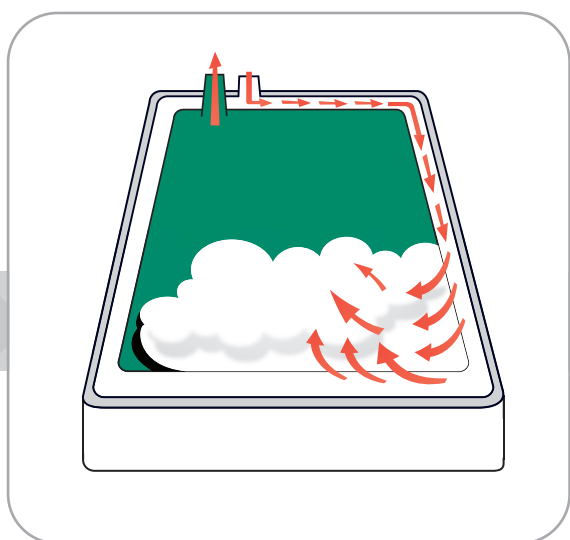


Wrapped instruments

# How STAT/M Works



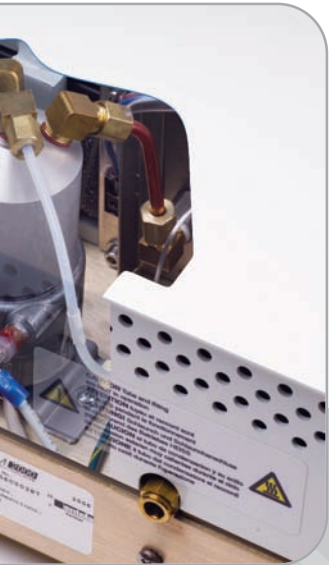
Ease of Operation



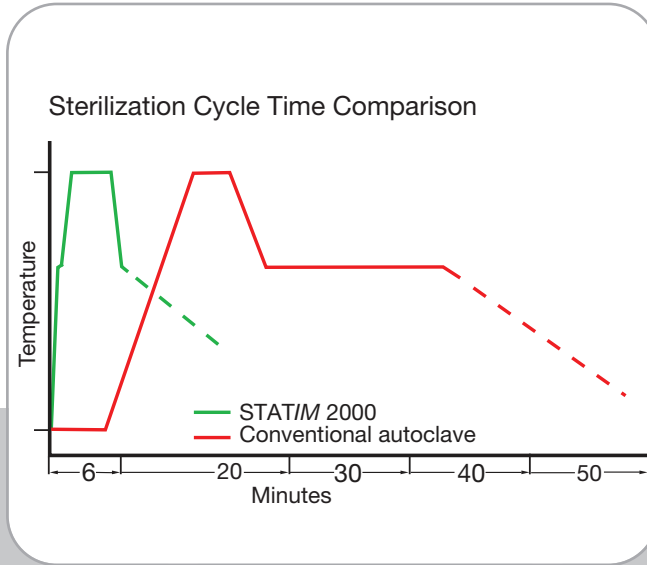
STAT/M 2000/5000 Steam Injection



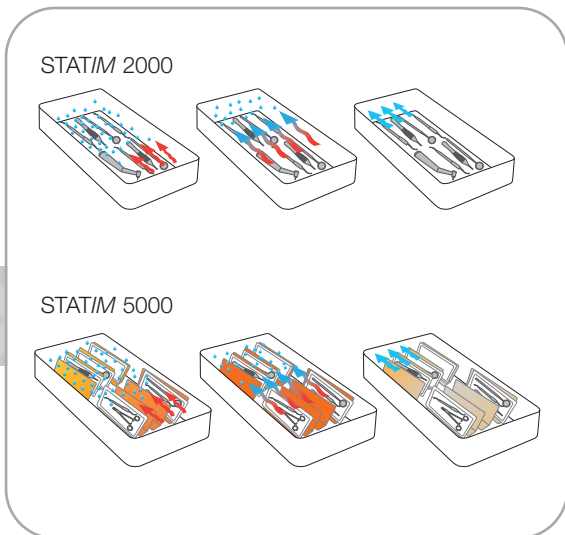
Single Use Water System



Small Steam Generator for Instant Steam



Ultra Fast Condition Phase



Drying Technology



Dry Load



## STAT/M

### Total Cycle time w/o drying

Sterilisation time / temp

	<b>Solid Unwrapped</b>	<b>Hollow Unwrapped</b>	<b>Hollow Unwrapped</b>	<b>Hollow Wrapped</b>	<b>Hollow Wrapped</b>	<b>Rubber/ Plastic</b>	<b>Rubber/ Plastic</b>
STAT/M 2000 G4	6:45	8:05	22:35	10:40	25:10	18:40	33:40
STAT/M 5000 G4	8:45	10:50	25:20	15:30	30:00	20:20	35:20

Visit [www.scican.com](http://www.scican.com) or call us for more information today.

#### STAT/M 2000 G4

Unit size (L x W x H): 19" x 16.25" x 6" or 48.3 cm x 41.5 cm x 15 cm  
Cassette internal dimensions: 11" x 7" x 1.5" or 28 cm x 18 cm x 3.5 cm  
Weight without water: 46 lbs / 21 kg  
Power consumption: 220-240V, 50Hz, 6A

#### STAT/M 5000 G4

Unit size (L x W x H): 22.7" x 16.25" x 7.5" or 57.7 cm x 41 cm x 19 cm  
Cassette internal dimensions: 15" x 7" x 3" or 38 cm x 18 cm x 7.5 cm  
Weight without water: 72 lbs / 33 kg  
Power consumption: 220-240v, 50Hz, 6A

The STAT/M G4 Cassette Autoclaves are currently pending regulatory clearance and are not available for sale at this time.

**CANADA:** SciCan Ltd. 1440 Don Mills Road, Toronto, Ontario M3B 3P9 / Phone (416) 445-1600 Fax (416) 445-2727 Toll free 1-800-667-7733 [custservice.ca@scican.com](mailto:custservice.ca@scican.com)

**GERMANY:** EU Representative: SciCan GmbH, Wangener Strasse 78, 88299 Leutkirch, Germany, Tel.: +49 (0)7561 98343 - 0 Fax: +49 (0)7561 98343 - 699

**SWITZERLAND:** SciCan Medtech AG, Alpenstrasse 16, 6300 ZUG, Switzerland, Tel: +41 (0) 41 727 7027 Fax: +41 (0) 41 727 7029

**USA:** SciCan, Inc. 701 Technology Drive, Canonsburg PA, 15317 / Phone (724) 820-1600 Fax (724) 820-1479 Toll free 1-800 572-1211 [uscustomerservice@scican.com](mailto:uscustomerservice@scican.com)